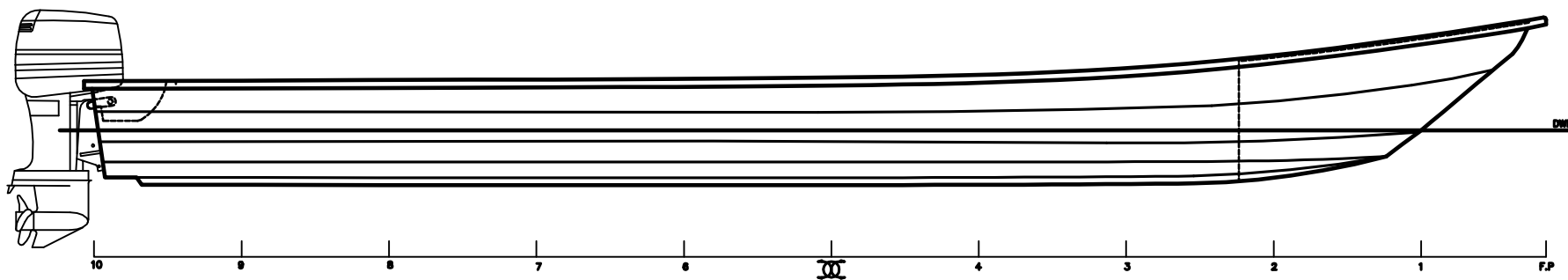


RevNo	Revision note	Date	Signature	Checked
-------	---------------	------	-----------	---------



PERFIL EXTERIOR

CARACTERISTICAS

ESLORA MAX.....9.23 m (30')
 MANGA MAX.....1.57 m
 PUNTAL.....0.68m
 CALADO.....0.35 m
 MOTOR.....40 hp
 DESPLAZAMIENTO.....1.97 Ton

Itemref	Quantity	Title/Name, designation, material, dimension etc		Article No./Reference	
Designed by JDELGADO	Checked by AN.R.ALVAREZ	Approved by - date AN.FABIO ZAPATA	Filename	Date 25/05/06	Scale 1:20
LANCHA BONITO 30'			DISP. GENERAL		
			TODOMAR	Edition ISO A2	Sheet 1/1